

Project Objective

Provide the basic understanding exploratory context and evaluation of opportunities in the Brazilian Equatorial Margin offshore basins, in preparation for the upcoming 11th ANP bid round.

Project Topics

- Petroleum system overview for each basin
- Interpretation of key seismic lines
- "Post-Mortem" of the main representative wells
- Indication of possible prospects

Project Partner



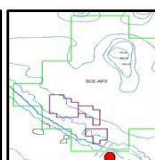
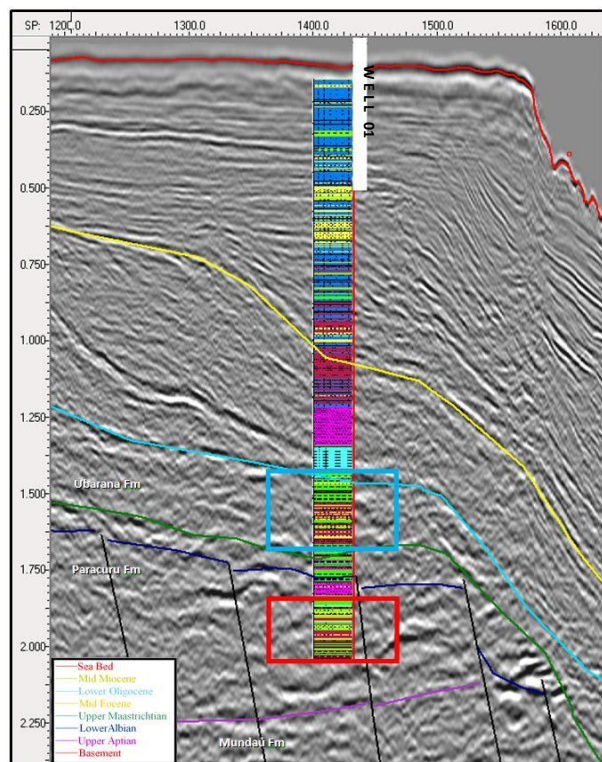
Contact Details



Alvaro Abrão

Tel.: + 55 21 9969-6521

alvaro.abrao@geohub.com.br



Remarks:

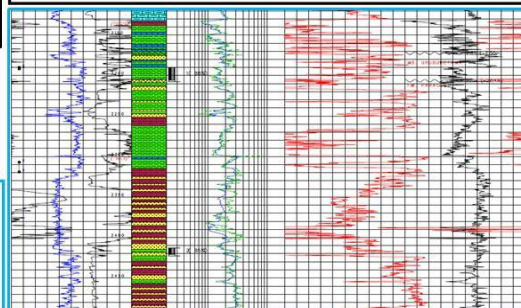
- No high-quality reservoirs were identified associated to any of the objectives tested.
- The lack of Hydrocarbons signs in the sandy interval of the Paracuru Formation compromises either generation or migration to this region of the basin.

Objectives:

- Turbidite sandstone facies with folding structures, of Upper Eocene / Lower Oligocene Maastrichtian age.

Objectives:

- River / delta sandstone from the Paracuru Formation, of Upper Aptian age, in a high block controlled by a thrust fault affecting the rift.



INTERPRETATION

Seismic profiles tied to well information

